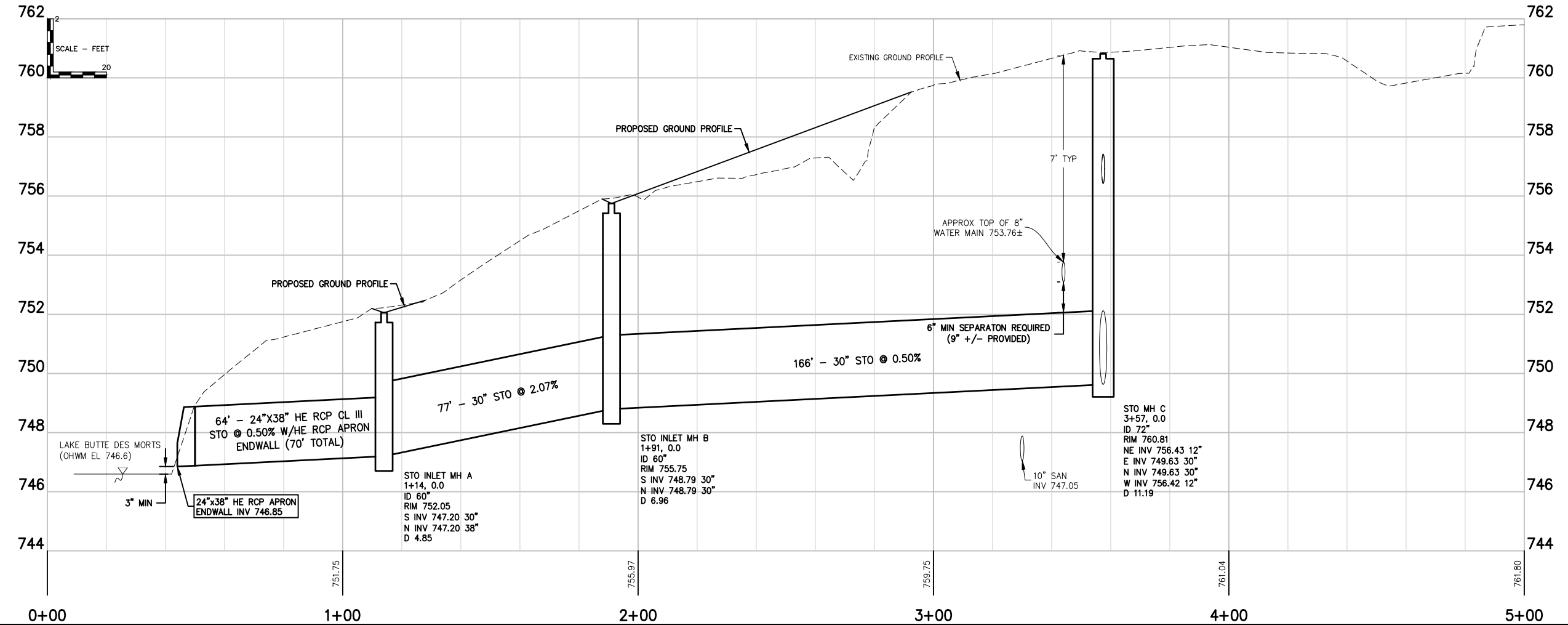
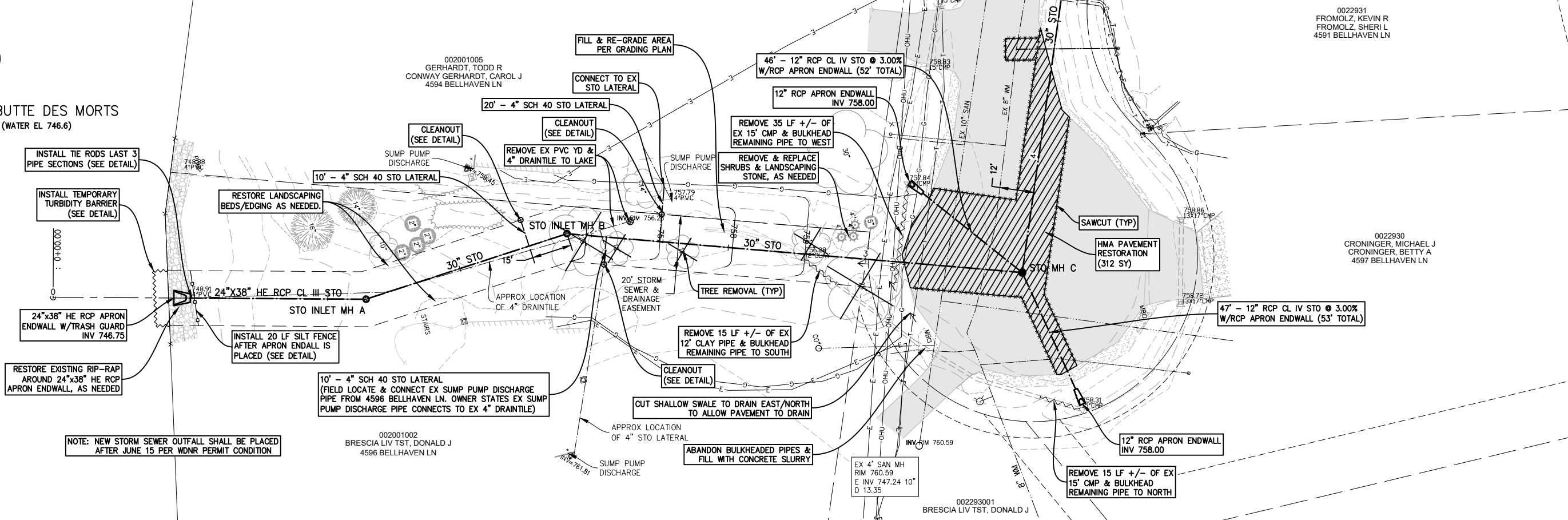




LAKE BUTTE DES MORTS  
(WATER EL 746.6)



K:\manila\PROJECTS\A0018\0922005\5\CADD\Civil3D\Plan\_Sheets\05\_BELLHAVEN\_LANE\_STORM\_SEWER.dwg, 04\_easement\_storm\_sewer\_Plot\_Date: 3/19/2024 9:59 AM, xref:stone

**McMAHON**  
ENGINEERS & ARCHITECTS, INC.  
1445 McMAHON DRIVE WEEHAW, WI 54986  
Mailing: P.O. BOX 1025 WEEHAW, WI 54987-1025  
PH 920.751.4200 FAX 920.751.4284 MCMGRP.COM

McMahon Associates, Inc. provides this form as an instrument of service. The copyright in this drawing is retained by McMahon Associates, Inc. The user agrees to indemnify McMahon Associates, Inc. from any liability for any use of or for any reproduction of this drawing without prior written consent by McMahon Associates, Inc.

NO.	DATE	REVISION

BELLHAVEN LANE IRON ENHANCED SAND FILTER  
TOWN OF ALGOMA, WINNEBAGO COUNTY, WI  
EASEMENT STORM SEWER

DESIGNED PTK	DRAWN RRS
PROJECT NO. A0018-09-22-00615	
DATE JANUARY, 2023	
SHEET NO. <b>04</b>	